

# THE MAINTENANCE BEACON

The Monthly Newsletter of the North Carolina Public School Maintenance Association

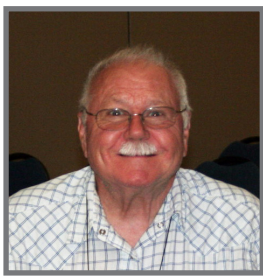
Volume 60, Number 1  
January 2023

## Contents

Wilkes County Schools  
Renovation Projects..... 4  
Governor Cooper Encourages  
Residents to Prepare for  
Winter Weather ..... 6  
Membership Application ..... 8  
Jay Palmer Scholarship  
Application..... 9



## Meet Carl Jobe



Carl Jobe is one of our trusted advisors on the North Carolina Public School Maintenance Association's Advisory Council and has been a member for 31 years. During his time with the NCPSMA he has held several positions in District Five including Secretary/Treasurer, Vice President, and President. He began working for the Greensboro City Schools in 1991 and merged with the High Point City Schools and Guilford County Schools in 1993 to become the consolidated Guilford County Schools.

Over the years Carl has received a lot of good advice. Mr. Sidney Woody was a strong supporter of NCPSMA and encouraged Carl and everyone else to join the NCPSMA membership. Carl said his first boss with

*continued on page 3*

## District Three Golf Tournamanet

NCPSMA District III held their annual golf tournament on Friday, October 28, 2022. The event was held at Wedgewood Golf Course in Wilson, North Carolina. Participants enjoyed turkey and ham sandwiches provided by the Sugar Plum Shoppe in Wilson. Beverages and snacks were provided by District III. It was a little windy and as the day went on it became cold and wet. Everyone had a good time, and they are hoping



*continued on page 3*

## Meetings and Events

### DISTRICT THREE MEETING

**February 16, 2023 at 4pm**

Location Toisnot Middle School  
1301 Corbett Ave, Wilson, NC 27893

For more information please contact NCPSMA District Three  
Secretary/Treasurer Sue Farmer at 252.399.7823 or  
Sue.Farmer@wilsonschoolsnc.net

### 15<sup>TH</sup> ANNUAL NCPSMA WESTERN CONVENTION/WORKSHOP

**May 24 and 25, 2023**

Johnson Springs Convention Center, Ridgecrest, NC  
For more info please contact Krisite Payne at 828.565.0115

## INDEX OF ADVERTISERS

ACI Systems .....	5
Atlantic Coastal Supply, Inc. ....	8
Davidson Sash & Door .....	4
D.H. Bruch Marketing, Inc. ....	4
Duro-Last Roofing .....	5
EduCon.....	7
Floor Action .....	7
Hardware Distributors.....	5
Hoffman & Hoffman .....	8
James M. Pleasants Co.....	9
John Q. Bullard.....	7
Ken Staley Co., Inc.....	5
Lewis Boiler Supply .....	9
Loman Garrett.....	3
Mannington Commercial.....	8
Matt Marshall & Co.....	5
Pinnacle Dryer Corp.....	5
Reece, Noland & McElrath.....	9
Richard K. Hunter & Co.....	4
Royalwood .....	4
Saffelle, Inc.....	9
Seating Safety Solutions.....	3
Seven Oaks Doors & Hardware .....	8
Seven Oaks Supply Co. ....	6
Sky Enterprises.....	8
The Blind Butler/Premier Drapery .....	6
The Cook & Boardman Group .....	2
WC Rouse .....	8

## MEETING DATES

The districts of NCPSMA meet twice yearly.

### District 1

January, July

### District 2

January, July

Pres. Ronald Moore  
Phone: 910.296.1875

### District 3

February, August

Pres. Greg Woodard  
Phone: 252.399.7822

### District 4

February, October

Pres. Donna Fields  
Phone: 910.678.2565

### District 5

March, September

Pres. Justin Dyson  
Phone: 336.909.2280

### District 6

April, October

Pres. Chris Adkins  
Phone: 980.343.4526

### District 7

May, November

Pres. Jeff Adams  
Phone: 336.551.1109

### District 8

March, November

V. Pres. Jason Kelly  
Phone: 828.456.2402

### Meeting Dates & Locations

Should be sent to The Maintenance Beacon two months in advance for publication.

### Deadlines

Publication deadline for articles and advertisements is first day of the month prior to month of publication.



## PROUDLY SUPPORTING NCPSMA MEMBERS

We're your premier provider of architectural doors and frames, door hardware and related building specialty products as well as complete system integration services including: physical security, enterprise networking, low voltage cabling and more!

### HELPING TO MAINTAIN NORTH CAROLINA'S SCHOOLS SINCE 1955

The Cook & Boardman Group of companies is your premier provider of architectural doors and frames, door hardware, related building specialty products, electronic access control as well as complete systems integration and information technology services. With six convenient locations across the Tar Heel State, we're uniquely positioned to provide the best solutions for educational facilities. Allow us to offer you:

- Assessments
- Value engineering
- Specification review
- Project management
- Fire and life safety code compliance
- Installation, maintenance and service
- Product support/warranty management

To eliminate procurement headaches, choose our team to act as your single source for new construction and remodeling projects, as well as for any IT implementation. Contact your local branch to get started today!

### MEET YOUR LOCAL COOK & BOARDMAN TEAMS



#### A3 Communications

Construction Divisions: 27 & 28

With offices in Charlotte and Raleigh, A3 Communications is one of the nation's leading systems integrators. Purchase both your IT and physical security needs from one of their many state contracts!

Charlotte Office: Matt Whitfield | (704) 956-3908  
Raleigh Office: Greg Moorer | (803) 269-9222



#### COOK & BOARDMAN



#### Cook & Boardman

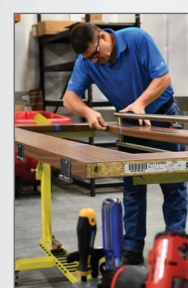
Construction Divisions: 8 & 10

With offices in Charlotte and Winston-Salem, Cook & Boardman has provided architectural doors, frames and hardware across the state since 1955. Counter sales, pre-installation, fabrication, installation and service available!

Charlotte Office: Ron Hill | (704) 936-6508  
Winston-Salem Office: Vernon Spence | (336) 462-1829



#### MARTIN ARCHITECTURAL PRODUCTS

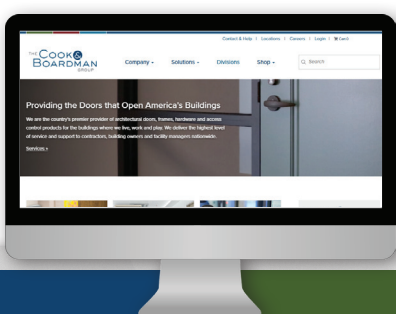
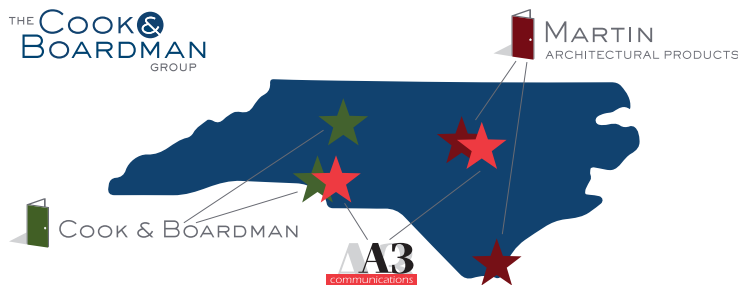


#### Martin Architectural Products

Construction Divisions: 8 & 10

With offices in Cary and Wilmington, Martin Architectural Products is the leading provider of architectural doors, frames and hardware in eastern North Carolina. Counter sales, installation and service available!

Cary Office: Ira Garner | (919) 868-6593  
Wilmington Office: Kyle Praeuner | (402) 841-1345



Visit [www.COOKANDBOARDMAN.com](http://www.COOKANDBOARDMAN.com) to learn more about our group, find helpful resources and to place product orders.

# Meet Carl Jobe

*continued from page 1*

the Greensboro City Schools also gave him lots of good advice, but the one that sticks with him the most was, "Don't waste your sick days or vacation days, because one day you will thank me." How true that was! Years later when Carl had 26 years with the school system, he used two years of sick days with the 2-½ years that he had transferred from the City of Greensboro to make for a total of 30-½ years for retirement.



Carl, Brantley and Bobbie Jobe

For Carl, when he was working, the most satisfying part of his job was being able to recognize a need or problem, design a solution, follow it through to completion, and see the user happy in the end. One of Carl's fondest memories is after completing a handicapped renovation to an elementary school and seeing the smile on the children's faces because they could use the facilities without help.



Brantley and Bobbie Jobe

Being a member of NCPSMA has opened doors and allowed for many opportunities for Carl who has learned a great deal over the years from the classes he has attended; however, Carl feels he has learned just as much from the collaboration with other members in attendance at the NCPSMA conventions. His membership in the NCPSMA has broadened his prospective of things in general and has given him the opportunity to connect to many other people who have lots of great knowledge that they were willing to share with Carl. Networking opportunities to reach out and connect with other school systems across the state "to compare notes" as to what is happening across the state has proven invaluable. Carl said, "the more you put into NCPSMA the more you get out of it." Carl feels the same way about NCPSMA and its members as you would feel about a family member; his wish for the future of NCPSMA is for more people to recognize the benefits they receive from being a member and attending the local district meetings, as well as the Western and Eastern Conventions.

State Vice President Mark Letchworth said, "Carl is a huge supporter of the NCPSMA, he has always stepped up to assist in any way. His wisdom and knowledge are commendable. We are truly blessed to have him in our association!"

Immediate Past President Bergie Speaks stated "Carl is an outstanding person and one of the most dedicated NCPSMA members I have known. He is always at the conventions and Advisory Council meetings. He also bends over backwards to support the association through time, donations and even conducting classes. Carl is a class act; it has been my pleasure getting to know him and serving with him over the years. He has been a great role model for others serving the association. Thank you, Carl, for all you do and thank you Bobbie for being so supportive of Carl and our Association."

State President David Martin said, "Wow! What do you say about Carl Jobe? I can honestly say that there's not a more devoted and professional member of the NCPSMA. Carl is always willing to help in whatever capacity he is needed. That along says volumes about him. This association would not continue to be successful without Carl showing others how to have a servant's heart!"

Over the years Carl has been a valued member of NCPSMA, hosting meetings for District Five, teaching classes throughout the state and for the Western and Eastern NCPSMA Conventions, holding offices within the district, serving on committees at the state level, and attending as well as volunteering at the conventions to help wherever needed. He and his wonderful wife, Bobbie, are always donating beautiful handmade wooden boxes and handmade jewelry to use in our raffles to help NCPSMA raise money.

Carl was born at Saint Leo Catholic Hospital in Greensboro, North Carolina on August 9, 1950. Greensboro is a beautiful city nestled among the rolling hills of the Piedmont region and is the county seat of Guilford County. It is the third most populous city in North Carolina and is home to a variety of attractions, including the Greensboro Science Center, the Bicentennial Garden, the International Civil Rights Center and Museum, Weatherspoon Art Museum, and the Greensboro Coliseum Complex. It is also home to the University of North Carolina at Greensboro, one of the oldest public universities in the United States.

When Carl was born his mom and dad had been living in a two-room rented house in Kimesville, North Carolina with his older brother and sister. On Thanksgiving Day 1950 the family moved into their new home; later in life Carl purchased that house and still lives in it to this day. So, except for college and a few short years afterwards, he has lived in the same house nearly his entire life.

*continued on page 4*

# District Three Golf Tournament

*continued from page 1*

it will be much warmer next year. We did have a great turnout. There was a total of 84 participants in the event.



There was a tie for first place. There is a system the golf course uses to determine the winner and it was determined United Laboratories (Scott Clark, Jeff Sigmon, Ryan Brissey and Jack Brissey) took first place with a score of 58. Each player was awarded a \$50 gift certificate from Wedgewood Golf Course.



Second place winner was Alford Mechanical (Allen Sherrod, Mike Norville, Dudley Etheridge and John Medustrial) with a score of 58. A \$40 gift certificate from Wedgewood Golf Course was given to each player.



Third place winner was Watson Electrical (Jonah Lawhead, Kyle Couch, Jeff Neligon and Dave Kellerman) with a score of 60. A \$30 gift certificate for each player was given from Wedgewood Golf Course.



The "Longest Drive", Hole # 14, and "Closest to the Pin", Hole # 12 was awarded to Jack Brissey with the United Laboratories team. "Closest to the Pin, Hole # 5, was awarded to Jeff Dodrill with



*continued on page 5*

## SEATING SAFETY SOLUTIONS, INC.

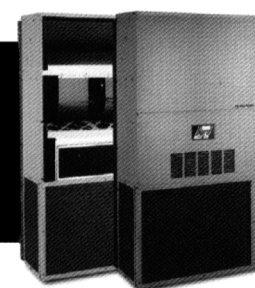
The Carolinas' Largest Factory Backed Bleacher Service and Repair Company

- Indoor/Outdoor Bleachers
- Grandstands
- Auditorium Seating
- Arena Seating
- Lecture Seating
- Basketball Backstops

(336)622-1678 • www.seatingsafetysolutions.com



## Wall Mount Equipment and Parts!



50% Quieter  
20% More Efficient

And ... "Service Simple"

**Loman Garrett**  
Precision Climate Management  
**800-669-1761**

**WALKWAY COVERS** **REPLACEMENT WINDOWS**



Phone 336-249-0276 Fax 336-249-7750

**Davidson Sash & Door, Inc.**  
1358 Piedmont Drive, Lexington, N.C. 27295-1952

**WEIL-McLAIN**  
Without compromise | 1881

Weil-McLain redefines heating all over again.



**Richard K. Hunter & Co.**  
Manufacturer's Agent  
3714 Alliance Drive, Suite 405, Greensboro, NC 27407  
712 West Lexington Ave., Suite 201, High Point, NC 27262  
PO Box 5105  
Call your distributor or visit [www.weil-mclain.com](http://www.weil-mclain.com) to learn more.

**BRUCH**  
MARKETING, INC.

**Door & Hardware Representatives**  
(704) 688-5214  
352 Crompton St.  
Charlotte, NC 28273

**ABH Manufacturing**  
Dormakaba, USA

- Best Locks, Closers, Hinges & Exit Devices (PHI)
- dormakaba Closers, Locks, Exit Devices & Commercial Hardware

**FRP Architectural Doors**  
**National Guard Products**  
**Overly Door Company**  
**Phoenix Door Systems**  
**Security Door Controls**  
**Trimco Hardware**

*Providing Great Service for 50 years*

**Royalwood Associates**  
Specialty Flooring

Serving North Carolina, South Carolina & Virginia for over three decades.

[www.royalwood.us](http://www.royalwood.us)  
919-957-3006



Specializing in Wood & Synthetic Flooring Services for Public & Private Schools:

- Annual Screening & Recoating
- Sanding & Refinishing
- Court line & logo painting, staining, tinting & design
- Resurfacing (pad & pour)
- Installation & design of new wood & synthetic floors

Gymnasiums, Weight Rooms, Dance Rooms, Stages, Running Tracks, Multi-purpose Rooms, etc.

For more information contact Greg Serpas at 336-707-9976 or [greg@royalwood.us](mailto:greg@royalwood.us)

# Wilkes County Schools Renovation Projects

Wilkes County Schools is currently in the middle of constructing a new classroom wing that will tie three other existing buildings together, put the office in the front of the school, provide extra seating in the cafeteria and provide a new walk-in cooler and freezer at Mount Pleasant Elementary School. Two of these wings are also being renovated as construction takes place. J.M. Cope is the general contractor. The construction has forced us to use a modular pod of six classrooms and group bathrooms. Construction itself has tasked everyone with a long walk to busses, cafeteria, and visitor parking. Given the scope of work, it has been a challenge for everyone, especially our food service department, Pre-K and volunteers. I would like to say a huge thank you to everyone who works or volunteers at the school. We have such great people working in our school district. Staff and students have a long way to travel in order to get to the busses and cafeteria not to mention the construction work and traffic to watch out for. Each time I am there when students and staff are going to lunch, they are always smiling and waving.

To date, footings are poured, all concrete slabs are complete, metal wall studs are in place, block fire walls are up and roof trusses are being set. If everything goes well, they will start installing the metal decking with insulation and the metal roofing closely following.

Even though it has been a challenge for deliveries, contractors' trucks and

*continued on page 7*



Demo of 1950 Building - July



Demo of 1950 Covered Walkways - July



Demo of Trees- July

## Meet Carl Jobe

*continued from page 3*

Carl attended Sumner School (1<sup>st</sup> thru 12<sup>th</sup> grade) which was conveniently located only a half mile from his house. After high school he attended Brevard College for two years and then began working several jobs. At age 29, Carl went back to college attending NC A&T University studying Architectural Engineering receiving his Bachelor of Science degree in 1985. A few years later, at the age of 40, Carl went back to school and completed his master's degree in 1991. Carl likes to say, "See even old dogs can learn!"

Carl and his wonderful wife Bobbie Jean have been married for 43 loving years. They have two grown sons, Jason Jobe and Kevin Jobe, and a seven-year-old grandson, Brantley Jobe.

Carl has been a Member and Trustee of Rehobeth United Methodist Church his whole life. He was a Boy Scout. He was Treasurer, Vice President and President of the Sumner Elementary School PTA, Treasurer for the Southern Guilford High School Band, Volunteer Fireman, and is a member of the North Carolina Locksmith Association.

Old cars are an addiction for Carl, who likes having and working on them. He loves to travel a bit but after about three days would rather just come back to the home he loves. He loves going to auctions to bring home way too many "treasures," or as Bobbie likes to call it, "junk!" As a child, Carl was fascinated with locks and keys, so now he enjoys opening things especially old safes. Sometimes they are quick and easy, but most of the time it is not, and you must study what you are working with and be patient.

Everyone wishes for more time in life, looking back on life Carl would have liked to have spent more time with his boys as they were growing up, and he wishes he would have gotten his locksmith license sooner in life.

In closing, Carl wishes to impart these words of wisdom to the younger generation. Think about your future and have long range plans for your future. because time and life pass too quickly. Live on a written budget, save some, invest some and give some...live a balanced life. Stay educated because learning is a lifelong process. Never quit learning. Love your family every day like it may be the last day you see them! Be kind to everyone, you don't know their story!

*By Kristie Payne*



**Duro-Last®; the most water, wind and worry-resistant roof in the business.**

Duro-Last's industry leading warranties are supported by prefabrication of roof panels and membrane accessories in a factory quality controlled environment. This eliminates up to 85% of field welding. Our highly trained technical field team inspects the field welded seams. Once you put a Duro-Last roof on, you can put it out of your mind.

**Edge-to-Edge & Deck-to-Sky™**

Bill Paynter 919-265-9045 Eastern NC	Jim English 980-875-8187 Western NC
--	---

Visit [duro-last.com](http://duro-last.com) or call to find out more.



# DISTRICT THREE GOLF TOURNAMENT

continued from page 3

the RJ Dees/Capital Electric team. Each was given a \$25 gift card to Lowe's donated by Service Roofing and Sheet Metal and Clegg's Termite and Pest Control. Thanks to Donna Ritterpusch with Nash Rocky Mount Schools for donating her time and taking these great pictures. I could not have done it without her.



Many thanks to the hole sponsors of the event and donations that were made. Those included: Affordable Heating, Cooling and Plumbing, Allegion, Allred Mechanical Services Inc., Atlantic Coastal Supply, Best Access, Braxton Britt Plumbing Co. Inc., Capital Electric Supply/Wilson, Carpets By David, Inc., CPL Architects & Engineers, Eastern Electric Supply/Rocky Mount, Edu-Con, Inc., Envirocon, Inc., Garris Evans Lumber Company, Hardware Distributors, LLC, Hoffman and Hoffman, Moye Fence Co, Inc., NSB, Inc., Saffelle, Inc., Service Roofing & Sheet Metal Company, Skinner Farlow Kirwan Architecture, PA, Southeastern Diesel Sales & Service, United Refrigeration, Water Guard, Watson Electrical, J. P. Weaver Inc., Webb's Barber Shop, Wilson Glass and Mirror, Inc., and Wolf Trail Engineering PLLC.



Thanks to everyone for their contribution in making this tournament a huge success. Volunteering their time were: Mark Letchworth, Greg Woodard and Sue Farmer with Wilson County Schools. Everyone is looking forward to next year.



Sue Farmer  
Wilson County Schools



**BOILER-BURNER / SALES & SERVICE**  
**MATT MARSHALL & CO.**  
 INDUSTRIAL EQUIPMENT & SUPPLIES  
 GREENSBORO, N.C.  
 PH: 336-292-8477 FAX: 336-299-0249  
 1-800-632-1274  
 Email: Sales@MMCO.net

*"Call us for your boiler room supplies."*

• ASCO "REDHAT" VALVES	• ITT GENERAL CONTROLS
• BACHARACH	• MAXITROL
• BELL & GOSSETT	• McDONNELL-MILLER
• CONBRACO	• SPIROTHERM
• ELECTRODES	• THERMOMETERS
• FIREYE	• TOPOG-E GASKETS
• GAUGES	• TRANSFORMERS
• HONEYWELL / RM 7800	• WATTS VALVES

WWW.MMCO.NET Email: Sales@MMCO.net  
 ★ Serving Industry Since 1954 ★  
 "Steam Is Our Specialty"



**DON'T REPLACE IT... RESTORE IT!**



<b>WE OFFER:</b>	<b>ADHERES TO:</b>
<ul style="list-style-type: none"> <li>• Cost effective installation</li> <li>• Leak proof warranties</li> <li>• Seamless roof systems</li> <li>• Eco-friendly materials</li> <li>• Energy Star products</li> </ul>	<ul style="list-style-type: none"> <li>• Modified Bitumen</li> <li>• Single-Ply (TPO &amp; EPDM)</li> <li>• Metal Roof panels</li> <li>• Smooth Built-Up-Roof</li> <li>• Spray Foam</li> </ul>

(888) 233-5997 Greensboro, NC  
 www.roofsbyaci.com @RoofsbyACI



More photos on page 9



**PINNACLE**  
 DRYER CORPORATION

Vandal-Resistant  
 Automatic and Quiet  
 Touch-Free  
 Low Maintenance  
 Made in USA!



Call 844-518-0997 Statesville, NC  
 www.PinnacleDryer.com

**KEN STALEY COMPANY, LTD**

4675 ROUTE 64 • BUILDING #16 • FRANKLINVILLE • NC 27248 • www.bleacher101.com  
 OFFICE: 336.685.4294 • FAX: 336.685.4242 • EMAIL: bleacher101@hotmail.com

**BLEACHERS**  
 GYM & OUTDOOR

- Safety Inspection & Repair Work
- Annual Service Program Offered
- Handicap Areas
- Full Power Electrical Systems
- Portable Power Systems
- Safety Rails
- Outdoor Seating Sales and Installation
- Authorized & Certified Bleacher Installers
- Basketball Goals Installed and Repaired

**MORE THAN 40 YEARS OF SERVICE**

SEE US FOR ALL OF YOUR BLEACHER NEEDS!

**Hardware Distributors, LLC**  
 a Kendell Door & Hardware Company

Architectural Wood Doors, Hollow Metal Frames & Doors,  
 Washroom Accessories & Toilet Partitions  
 Installation service available

PO Box 16847  
 Greensboro, NC 27406  
 1-800-632-1324

## Governor Cooper Encourages Residents to Prepare for Winter Weather

Governor Roy Cooper is encouraging North Carolinians to plan and prepare now, before potentially dangerous winter weather arrives.

“Winter weather predictions across North Carolina can be challenging, which means we all need to be prepared by updating emergency preparedness kits and reviewing our family’s emergency plan,” Governor Cooper said. “Residents should stay informed by paying attention to trusted and official sources of information regarding weather forecasts and alerts.”

While warmer and drier than normal conditions are favored across North Carolina due to La Niña conditions likely continuing throughout the winter, this does not mean that wintry precipitation will not develop across the state, leading to potentially icy roads and other hazards.

Governor Cooper urges residents to monitor winter weather conditions and forecasts by listening to local media and paying close attention to winter weather watches, warnings, and advisories. While the criteria for these may vary across North Carolina the premise is the same so remember:

- ☐ Winter Storm Watch is issued when conditions are favorable for either heavy snow, sleet, or freezing rain within the next 24-48 hours.
- ☐ Winter Storm Warning is issued when confidence is high that a winter storm will cause significant impacts within the next 24 hours.
- ☐ Winter Weather Advisory is issued when wintry weather is expected and residents should exercise caution as light to moderate amounts of snow, sleet, or freezing rain are expected within the next 24 hours, causing travel difficulties.

To help ensure you are ready for winter weather, North Carolina Emergency Management officials urge you to:

- ☐ Always keep at least a three-day supply of nonperishable food and a supply of medication in your home.
- ☐ Keep fresh batteries on hand for weather radios and flashlights.
- ☐ Dress warmly. Wear multiple layers of thin clothing instead of a single layer of thick clothing.
- ☐ Properly vent kerosene heaters and ensure any electric generators are operated outside and away from open windows or doors to prevent carbon monoxide poisoning. Never burn charcoal indoors.
- ☐ Use a National Oceanic and Atmospheric Administration weather radio or a weather alert app on your phone to monitor changing weather conditions.
- ☐ Keep alternative heating sources and fire extinguishers on hand. Be sure your family knows how to use them.
- ☐ Store an emergency kit in your vehicle. Include scraper, jumper cables, tow chain, sand/salt, blankets, flashlight, first-aid kit, and road map.
- ☐ Make an emergency supplies kit for your pet and include medical records, first-aid kit, enough canned/dry food, and water for three to seven days and pet travel bag or carrier.
- ☐ Do not leave pets outside for long periods of time.
- ☐ Ensure your pet has a well-fitting collar.
- ☐ Bring pets inside when temperatures drop below freezing.
- ☐ Move livestock and other animals to a sheltered location with food and water.

If you must travel during bad weather, emergency officials remind motorists to leave plenty of room between you and other vehicles and, if driving on snow- or ice-covered roadways, reduce your speed. If conditions worsen, pull off the highway and remain in your vehicle. Do not set out on foot unless you can see a building close by where you can take shelter.

The Department of Public Safety and the National Weather Service work together to help North Carolinians plan and prepare for winter weather by providing accurate weather and safety information.

For more information on how to prepare for winter storms and other hazards that affect North Carolina, visit [readync.gov](http://readync.gov).

**YOUR #1 SOURCE FOR...**

- CUTTING-EDGE FLOOR CARE PRODUCTS
- RESTROOM CLEANING PROGRAMS
- ODOR CONTROL
- FLOOR CLEANING EQUIPMENT
- PAPER PRODUCTS & DISPENSERS

800-230-7460  
OAKBORO, NC

## THE MAINTENANCE BEACON

**Executive Director:** Kristie Payne  
**Phone:** 828.565.0115  
**E-Mail:** [ncpsmaoffice@gmail.com](mailto:ncpsmaoffice@gmail.com)  
**Website:** [www.ncpsma.org](http://www.ncpsma.org)

The Maintenance Beacon is the monthly publication of the North Carolina Public School Maintenance Association. Advertising, editorial material, memberships and subscriptions are handled through the office of the Executive Director, 224 Mulberry St. Clyde, NC, 28721.

NCPMSA does not guarantee, warranty or defend the use of any products or services of those who sponsor, advertise or contribute articles in The Maintenance Beacon.

**Officers of the Association**

<b>President</b>	Bergie Speaks	336.667.2021
<b>Vice President</b>	David Martin	704.658.2630
<b>Secretary</b>	Justin Dyson	336.909.2280
	Mark Letchworth	252.399.7822

[premierdraperycleaning.com](http://premierdraperycleaning.com)  
O: (910) 794-1664

**All the world's a stage and we're here to clean it!™**  
 Stage Draperies • Acoustical Panels • Upholstery • Flameproofing

The Southeast's premier service for on-site cleaning, flame retardant application, and certification

# Wilkes County Schools Renovation Projects

continued from page 4

equipment because of limited space and parking, everyone has worked together to keep our staff and students safe.

We currently have four other projects we are working on which we received state funding for. Pinnacle Architecture is working on plans or waiting on surveys for each.

1. Wilkes Central High School, site plans are being drawn for a new gymnasium.
2. North High School, new home and away bleachers at the football field.
3. East High School, new home bleachers, currently waiting on survey.
4. West High School, re-do both the track and tennis courts. Track to be resurfaced and tennis courts will have the existing asphalt completely removed, any bad soil removed with a new base, new surfacing, sleeves, poles, and netting.

Lastly, we are working with CWMS to get a final on a new outdoor classroom, removing an old playground and grading for a new one at C. B. Eller, grading at Ronda Clingman to construct a new outdoor classroom and working with Mulberry to create an outdoor learning area.

As always, it is our desire to make sure each structure is safe and inviting for our staff and most importantly our students. It is great to see the look on students faces when students get to use a new structure (play equipment, building or classroom) for the first time.

*Bergie Speaks*  
*Wilkes County Schools Maintenance*



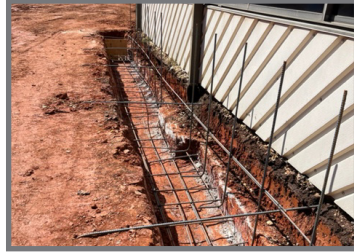
New Modular



Installation of New Walks/Ramps



Footings & Underground Plumbing



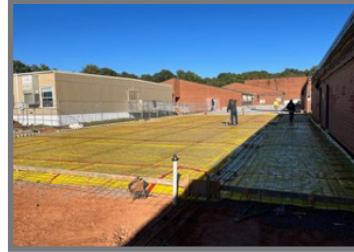
Footings & Underground Plumbing



Footings & Underground Plumbing



Footings & Underground Plumbing



Slab Prep and Pour



Slab Prep and Pour



Slab Prep and Pour



Final Underground plumbing, electrical and slab prep



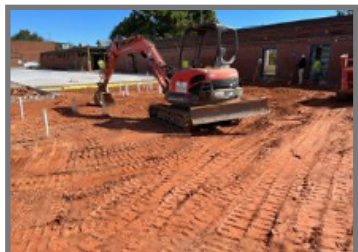


Here to help you with all your Pump, Boiler, Hydronic & Steam Accessory Needs.  
[www.jqbullard.com](http://www.jqbullard.com) | 919.389.6417





Final Underground plumbing, electrical and slab prep



Final Underground plumbing, electrical and slab prep

Last Large Pour



Last Large Pour



Fire Walks Going Up



Group Bathroom Slab Prep



Group Bathroom Slab Prep



Steel Framing



Steel Framing




Steel Framing



Steel Framing



Steel Framing



ENERGY MANAGEMENT WHERE IT BELONGS

EduCon Inc.  
 Winston-Salem, North Carolina  
 336-409-4694  
 info@educonenergy.com  
 www.educonenergy.com

- EduCon can assist Maintenance Departments with:**
- ✓ Uploading existing utilities data, or creating a new utilities database in the EPA's Portfolio Manager
  - ✓ Enter information from monthly utilities invoices
  - ✓ Prepare monthly and annual reports that include summarized data analysis



## Floor Action

Serving your area for over 30 years

We install, repair and refinish all types of floors. Bleacher repair and inspections. Fire and water damage restorations. Power volleyball inserts and installation.

**Patrick Morningstar, Owner**  
**Josh Walton, Sales**

Toll Free 800.745.6116      Fax 252.291.8042  
 Local 252.291.6116      scsbyflooraction@gmail.com

**W.C. ROUSE & SON**  
BOILER ROOM EQUIPMENT & SERVICES

servicing all boiler brands,  
24 hours a day, 7 days a week

Our purpose is simple: **To leave every boiler room better than we found it.**

Offering:

- 24/7 Service
- Parts, for all Boiler Brands
- Boilers, of All Constructions
- Boiler Ancillary Equipment
- New, Used and Rental Equipment



Greensboro, NC 336-299-3035    Charlotte, NC 704-583-4005    sales@wrouse.com wrouse.com    Wilmington, NC 336-299-3035    Columbia, SC 803-765-1477

# DISTRICT THREE GOLF TOURNAMENT

continued from page 5



National Air Filters	67	F C U	69	United Laboratories	58
Alford Mechanical	58	Envirocon Inc.	67	Rubes Plumbing/Capital Electric	64
Wilson County Schools	60	Garland Co.	66		
Wolf Trail Engineering	60	Hoffman & Hoffman	67		
Stinner Jarlow	71				
Airwan Architecture	70				
Central Builders/Baker Dist	69				
Sultans Of Swing	69				
C G J R	61				
Carolina Plumbing	67				
		Hardware Distributors	70		
		Johnson Controls	70		
		Team NC Sound	68		
		DirtBugs	62		



Jeff Dodrill with RJ Dees- Capital Electrical Closest to the Pin - Hole 5



Jack Brissey with United Laboratories Closet to the Pin - Hole 12 and Longest Drive - Hole 14



United Laboratories - 1st Place



Alford Mechanical - 2nd Place



Watson Electric - 3rd Place

**SEVEN OAKS DOORS & HARDWARE, INC.**  
www.SevenOaksHardware.com

Call us for all your doors, hardware, access control, and toilet partition needs.



Oakboro, NC  
**704-485-2014**

Authorized Security Center  
ALLEGION

**HOFFMAN & HOFFMAN, INC.**

## MAKING INDOOR AIR SAFER

HVAC system solutions to improve your indoor air quality and help protect building occupants.

Solutions from trusted manufacturer's like:



24/7/365 Parts Available  
(800) 332-2295



www.hoffman-hoffman.com (336) 292-8777

## HUMAN TRAFFICKING IS HAPPENING IN THE UNITED STATES.

### WEAR BLUE ON JANUARY 11<sup>th</sup> TO RAISE AWARENESS

January 11  
#WearBlueDay  
@DHSBlueCampaign

**BLUE CAMPAIGN**  
One Voice. One Mission. End Human Trafficking.

**Mannington COMMERCIAL**

### Product Offerings

- Luxury Vinyl Tile
- Modular Carpet
- Broadloom Carpet
- Entrway Carpet
- Area Rugs
- Resilient Sheet
- Rubber Sheet & Tile
- Legato Liquid Linoleum
- Finishing Accessories

Please Reference:  
Floor Covering & Installation Services for State of North Carolina (Contract 360)

Crafted with Purpose    manningtoncommercial.com

**SKY ENTERPRISES, INC.**    Cooling Towers    Softners  
Hot & Cold Water Loops    Boilers  
Pumps    Timers    Controllers

Water Treatment Specialist    (252) 522-1435 • 1-800-729-0590  
PO Box 1764 • Kinston, N.C. 28503

**Atlantic Coastal Supply, Inc.**  
Plumbing & Industrial Specialties

www.acsparts.net  
PO Box 2887  
Greenville, NC 27836  
Phone: 800.520.0556 • Fax: 800.204.5630 • Email: sales@atlanticcoastalsupply.com

# MEMBERSHIP APPLICATION

Membership runs from July 1, 2022 through June 30, 2023.

Membership Dues are \$20.00 if paying by check. Complete this form and submit along with your check for \$20.00 to: **NCPSMA, 224 Mulberry Street, Clyde, NC 28721**

NAME			
LEA (Local Educational Agency) OR COMPANY			
ADDRESS			
CITY	STATE	ZIP	
TELEPHONE			
E-MAIL			
Would you like a reminder sent to your e-mail each month when the latest edition of the Maintenance Beacon is available online?		YES	NO

CHECK ALL THAT APPLY		
<input type="checkbox"/>	REGULAR MEMBER	Available to all maintenance employees of various city, county and state public schools as well as institutions of the community colleges.
<input type="checkbox"/>	REGULAR RETIRED MEMBER	Available to all RETIRED maintenance employees of various city, county and state public schools as well as institutions of the community colleges.
<input type="checkbox"/>	ASSOCIATE MEMBER	Available to all people interested in the betterment of public-school maintenance including school board members, superintendents, principals, teachers and vendors. ** Associate Members DO NOT have voting privileges.
<input type="checkbox"/>	MAINTENANCE DIRECTOR	The Maintenance Director / Supervisor of your LEA
<input type="checkbox"/>	MEMBERSHIP RENEWAL	Continuation of current membership
<input type="checkbox"/>	NEW MEMBER	First time membership

Online payments of \$22.00 per membership are accepted at [www.ncpsma.org](http://www.ncpsma.org)

<b>FOR OFFICE USE ONLY</b>	
PAID FOR WITH CHECK #	RECEIPT #



# Jay Palmer Scholarship Application

2023 Application for Jay Palmer Scholarship North Carolina Public School Maintenance Association  
Applications must be postmarked by **February 28, 2023**

**A. APPLICANT INFORMATION:**

Full Name \_\_\_\_\_  
 Address **(REQUIRED)** \_\_\_\_\_  
 City \_\_\_\_\_ State \_\_\_\_\_ Zip \_\_\_\_\_  
 Phone (\_\_\_\_) \_\_\_\_\_ E-mail address **(REQUIRED)** \_\_\_\_\_  
 Date of Birth \_\_\_\_\_ Age \_\_\_\_\_ Social Security # \_\_\_\_\_  
 Applicant Employer \_\_\_\_\_

Approximate Salary:  
 \_\_\_ \$0-\$10,000 \_\_\_ \$10,001-\$20,000 \_\_\_ \$20,001-\$30,000  
 \_\_\_ \$30,001-\$40,000 \_\_\_ \$40,000-above  
 Current Member of NCPMSA **(REQUIRED)** \_\_\_ yes \_\_\_ no District # \_\_\_\_\_  
 Please include a copy of current NCPMSA membership card with completed application.  
 Note: if applicant is employed by an LEA Maintenance Department and Active member of NCPMSA, Item C. is not required.

**B. APPLICANT SPOUSE INFORMATION (If applicable):**

Full Name \_\_\_\_\_  
 Address \_\_\_\_\_  
 City \_\_\_\_\_ State \_\_\_\_\_ Zip \_\_\_\_\_  
 Applicant Spouse Employer \_\_\_\_\_  
 Work Phone Number \_\_\_\_\_  
 Approximate Salary:  
 \_\_\_ \$0-\$10,000 \_\_\_ \$10,001-\$20,000 \_\_\_ \$20,001-\$30,000  
 \_\_\_ \$30,001-\$40,000 \_\_\_ \$40,000-above

**C. APPLICANT'S PARENT INFORMATION:**

Father \_\_\_\_\_ Mother \_\_\_\_\_  
 Address \_\_\_\_\_ Address \_\_\_\_\_  
 City \_\_\_\_\_ City \_\_\_\_\_  
 State \_\_\_\_\_ State \_\_\_\_\_  
 Zip \_\_\_\_\_ Zip \_\_\_\_\_  
 Employer \_\_\_\_\_ Employer \_\_\_\_\_  
 Work Phone \_\_\_\_\_ Work Phone \_\_\_\_\_  
 Home Phone \_\_\_\_\_ Home Phone \_\_\_\_\_  
 Father E-mail address \_\_\_\_\_  
 Mother E-mail address \_\_\_\_\_  
 Current Member of NCPMSA **(REQUIRED)** \_\_\_ yes \_\_\_ no District # \_\_\_\_\_  
 Please include a copy of current NCPMSA membership card with completed application. **(REQUIRED)**

**D. If applicant is a Dependent Child or Adopted Child, Parents Salaries (combined)**

\_\_\_ \$30,000-\$40,000 \_\_\_ \$40,001-\$50,000 \_\_\_ \$50,001-\$60,000  
 \_\_\_ \$60,001-\$70,000 \_\_\_ \$70,001-\$80,000 \_\_\_ \$80,001-\$90,000  
 \_\_\_ \$90,001-\$100,000 \_\_\_ \$100,001 and over

**E. Please list other family members (siblings, parents, spouse, etc.) attending school/college**

Name & Relationship \_\_\_\_\_ School/College \_\_\_\_\_  
 Expected Graduation Date \_\_\_\_\_ Age \_\_\_\_\_

**F. High School Applicant Attended/Attends **(REQUIRED)** \_\_\_\_\_ Year of Completion**

**G. College Attending, Applied or Accepted to: \_\_\_\_\_**

Years Attended \_\_\_\_\_ Year to Begin \_\_\_\_\_ \*Student ID# **(REQUIRED)** \_\_\_\_\_  
**College or university/accepted to **(REQUIRED)** \_\_\_\_\_**  
 Address \_\_\_\_\_ City \_\_\_\_\_ State \_\_\_\_\_  
 Zip \_\_\_\_\_  
**Make checks payable to: **(REQUIRED)****  
 Institution \_\_\_\_\_ Applicant \_\_\_\_\_  
 Address \_\_\_\_\_ City \_\_\_\_\_ State \_\_\_\_\_  
 Zip \_\_\_\_\_

**Include a copy of original acceptance letter from university, or a document that is proof of continued acceptance (if 2nd, 3rd, or 4th years). **(REQUIRED)****

**H. List other sources of Financial Assistance \_\_\_\_\_**

**I. On a separate sheet, list applicant's extracurricular activities including, but not limited to academic, church, community, etc. **(REQUIRED)****

**J. \*Briefly convey in 200-500 words on a separate sheet your hopes, wishes and desires for your academic and professional future, along with why you chose the college you plan to attend. Please fill out completely and honestly. **(REQUIRED)****

**K. PLEASE Include all **(REQUIRED)** information!**

**Incomplete applications will not be considered.**

Recipients will be announced or notified by the end of June each year. If awarded scholarship, check will be written to the school and applicant, mailed on or about the first week of August of award year.

Completed application should be mailed to:  
 John Labban, Scholarship Chairman  
 C/O James Palmer, III  
 Jay Palmer Scholarship Fund  
 6735 East Old US Hwy 64  
 Lexington, NC 27292-9068



**JMP**  
 HYDRONIC AND STEAM EQUIPMENT, PUMPS, HEAT EXCHANGERS, COOLING TOWERS, WATER SOURCE HEAT PUMPS, PLUMBING

**CLIMATEMASTER**  
 Geothermal Heat Pump Systems

**Lochinvar**  
 CONDENSING BOILERS  
 WATER HEATERS

**B&G**  
 Bell & Gossett  
 CENTRIFUGAL PUMPS  
 HEAT EXCHANGERS

**HYFAB**  
 HYDRONIC PACKAGES  
 PRESSURE BOOSTERS

**BAC**  
 COOLING TOWERS

James M. Pleasants Company  
 Greensboro-Charlotte-Raleigh-Wilmington  
 www.jmpco.com  
 800-365-9010

**"Responding to Modern Engineering Challenges  
 With Innovative, Cost Effective Solutions"**

**RNM ENGINEERS**  
**Reece, Noland & McElrath, Inc.**  
 409 North Haywood Street / PO Box 540  
 Waynesville, NC 28786  
 Waynesville (828) 456-9851 Asheville (828) 253-3280  
 Fax (828) 456-6205  
**WWW.RNM-ENGINEERS.COM**

**Saffelle, Inc.**  
 SANITARY MAINTENANCE EQUIPMENT & SUPPLIES  
 "Partnering with a Passion"  
**1-800-672-4525**  
 GREEN EARTH  
**www.saffelle.com**

**KEEP CALM & WASH YOUR HANDS**

**Parts & Service 24 hours a day, 7 days a week!**  
 Phone: (336) 697-2090 Fax: (336) 697-8247

**LEWIS BOILER**  
 3127 Cedar Park Road  
 Greensboro, NC 27405  
 www.lewisboiler.com  
**We Keep the Fires Burning!**  
**We Carry ALL Makes/Models for steam, oil, gas, or hot water boilers**

HONEYWELL CONTROLS	OIL FILTERS
HOFFMAN	TOPOG-E GASKETS
BELL & GOSSETT	FIREYE CONTROLS
BOILER SECTIONS	McDONNELL-MILLER
GOODWAY BRUSHES	REGULATORS, TRAPS
GLOBE, GATE, SOLENOID, BUTTERFLY, ETC. VALVES	ITT GENERAL CONTROLS
OIL NOZZLES	IGNITORS/ELECTRODES
BURNERS & ACCESSORIES	REFRACTORY MATERIAL
	PIPE FITTINGS